

A torn neck seal can cost you the best dive of your life. The innovative SI Tech Neck Tite, installed in your suit, turns the disaster of a torn neck seal into a mere inconvenience, saving you frustration, time and money.

Neck Tite can be factory fitted or installed the next time your neck seal needs replacement.

Revolutionary in simplicity and function, Neck Tite is the "Seal Solution".

- ✦ Easy, low cost installation.
- ✦ Ease of exchange and maintenance.
- ✦ A Neck Tite latex seal can be fitted in minutes, without using any glue.
- ✦ Exceptionally strong and flexible sealing joint between seal and ring.
- ✦ The very small diameter Neck Ring minimizes discomfort and interference with the BCD or Harness.
- ✦ The Neck Ring is flexible and has no sharp edges.
- ✦ SI TECH Neck Tite neck seals, with an extra thin and comfortable sealing edge, are available in 3 sizes.

Your rental or school suits equipped with Neck Tite will enable you to provide every customer with a custom fit neck seal, increases the comfort immensely.

Neck Tite

THE "NECK SEAL QUICK EXCHANGE" SYSTEM.



NECK TITE INSET 60177-S,M,L
Installation tool included



Necktite IN set including installation tool, neckring, spanner ring and neckseal

- 60177-L Necktite IN set Neckseal LARGE
- R 60177-M Necktite IN set Neckseal MEDIUM
- R 60177-S Necktite IN set Neckseal SMALL

INSTALLATION

The recommended glue for attaching the SI Tech Neck Tite Neck Ring is a PU-based adhesive.

Recommendations on adhesive types, solvents and installation to the suit material must come from your suit manufacturer, or an authorized suit repair facility.

If preferred the Neck Ring can be curved from its original flat shape by heating to 150° Celsius for 20 minutes and placed over a tube diameter 200 mm until cool. This shall be done before gluing.

Recommended Installation

Buff surface to be glued to a rough finish. Either side of the Neck Ring #60176 can be attached to the suit.



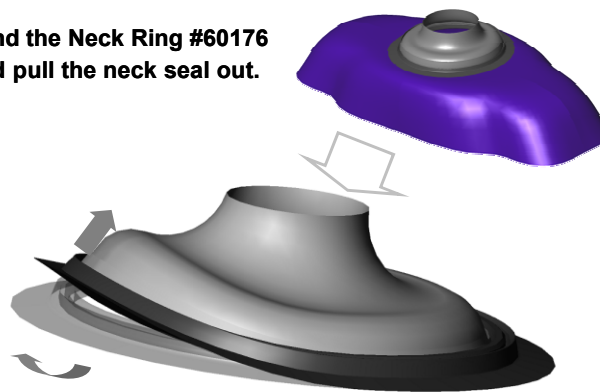
The Neck Ring #60176 can be fitted to either the inside or the outside of the suit.



EXCHANGING SEALS

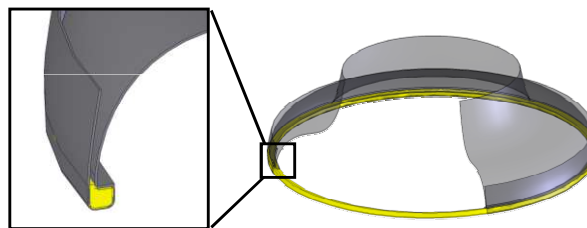
Removing a Neck Seal

Bend the Neck Ring #60176
And pull the neck seal out.



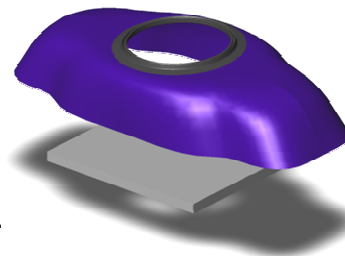
Replacing a Neck Seal

Fit the Neck Seal #61655 around the Spanner Ring #60172 as shown.

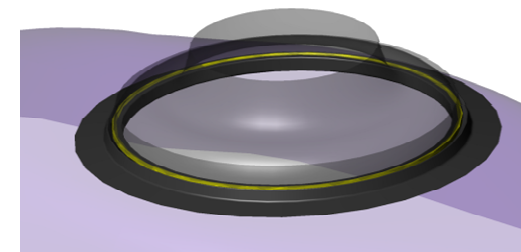


Place the drysuit with mounted Neck Ring on a flat hard surface.

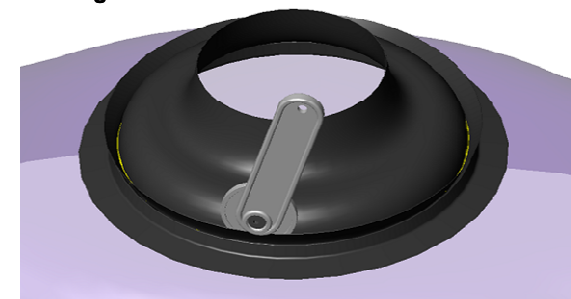
NOTE:
Avoid bending the zipper.



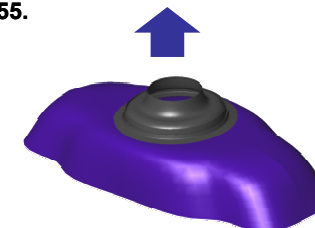
Place Neck Seal #61655 and Spanner Ring #60172 in the tapered groove of the Neck Ring #60176.



Use Installation Tool #60160, press Spanner Ring #60172 down until you feel it lock into the Neck Ring #60176 groove.



Test the attachment strength by pulling at the Neck Seal #61655.



NOTE: A leakage check at shallow depth, and with the assistance of another diver, is strongly recommended.

A redundant buoyancy device (e.g. BCD) should always be used when diving.

Only use SI Tech Neck Tite Neck Seals and original parts with the SI Tech Neck Tite System.